

ALU 30 FRONT ROLL

DESCRIPTION

The ALU 30 roll-up door is made to measure with double-walled installable slat of extruded aluminium, each 30mm in height.

The door can be used for compartment, and as a loading or access door in all types of vehicles as a replacement for conventional opening doors.

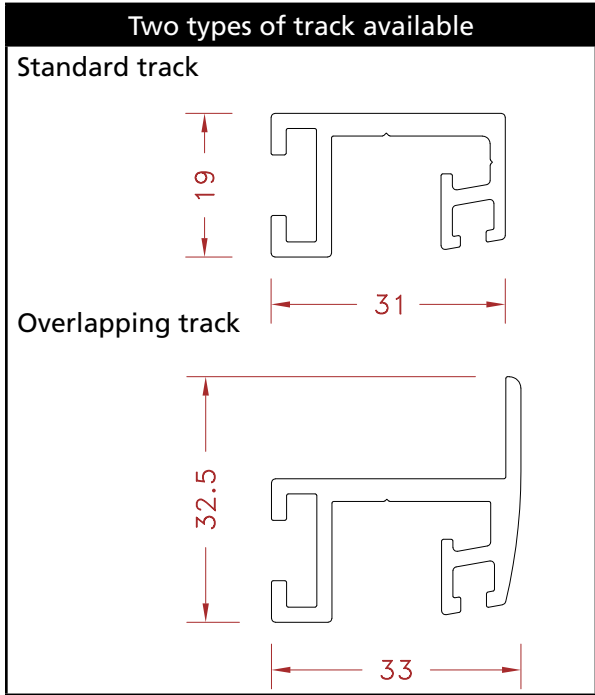
It is delivered in the form of separate parts ready to be installed.

- 1 assembled door
- 1 pair of aluminium track ready to be fixed into position.
- 1 tensed roller
- 1 bag of accesories

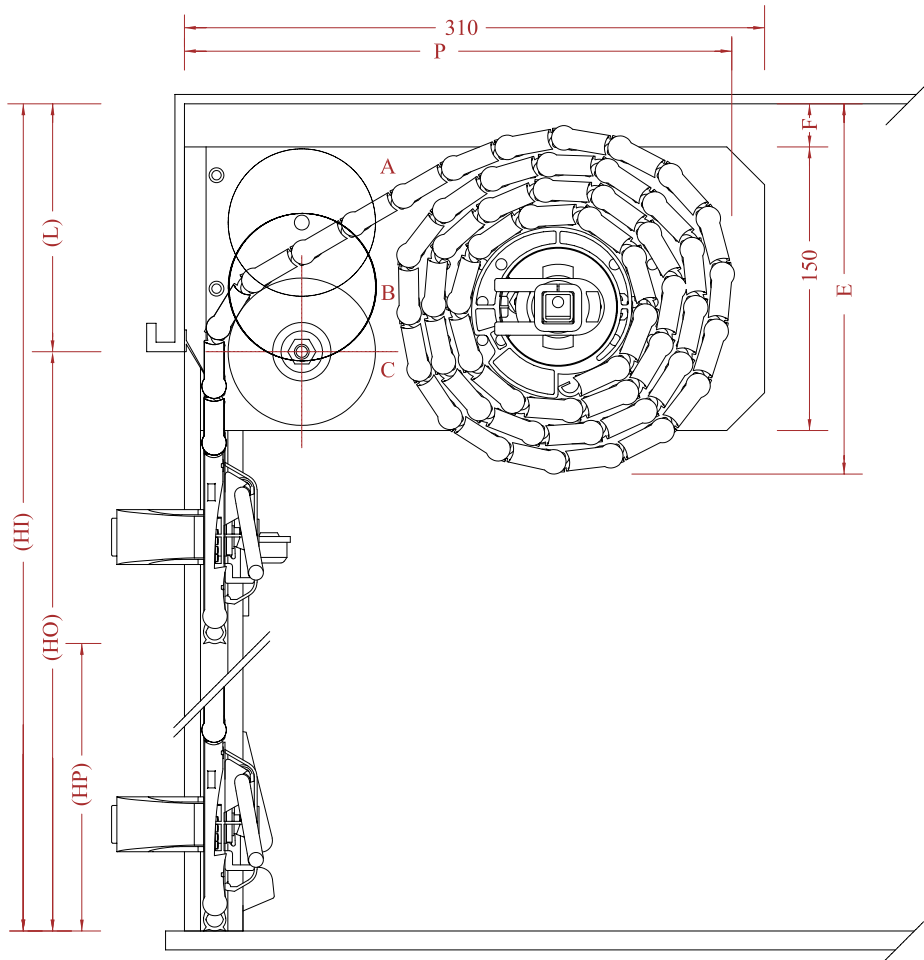
The standard finish is in RAL 7035 satin finish powder coated gray, but can also be delivered in RAL 9010, anodized, mill or in another choice of RAL.

Different types of closing systems are suggested in the following pages as well as options.

Usage dimensions	
Maximum height	2,200mm
Maximum width	2,500mm
Minimum width	550mm
Maximum area	4 m²



SETTING UP



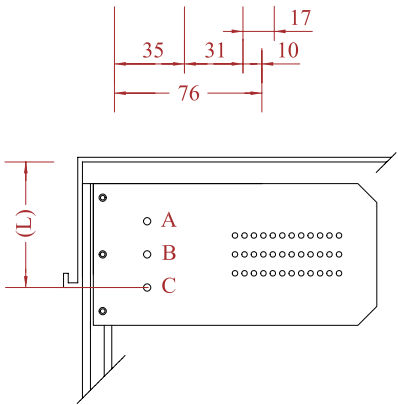
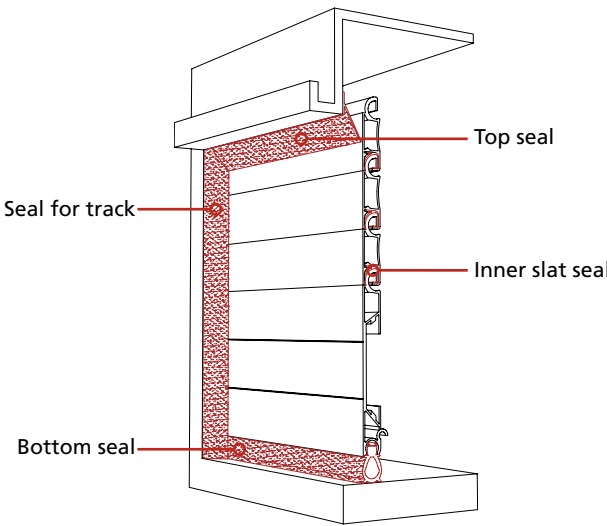
	Description
HI	Interior Height
HO	Opening Height
HP	Passing Height
L	Header
P	Depth
LP	Passing Width
LER	Total Width

Formulae to remember:

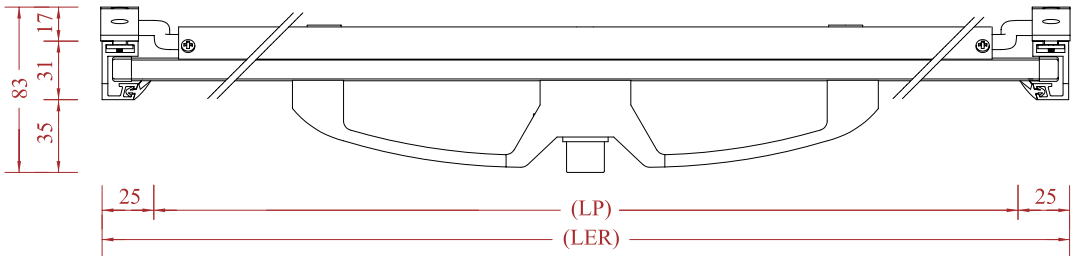
$$HI = HO + L$$
$$HP = HO - 100mm$$

L = to be calculated according to HO and with the help of the table below. Take care: various possibilities according to the position A, B or C of the wheel. For optimum functioning of the door the position selected should be C.
 $LP = LER - 50mm$

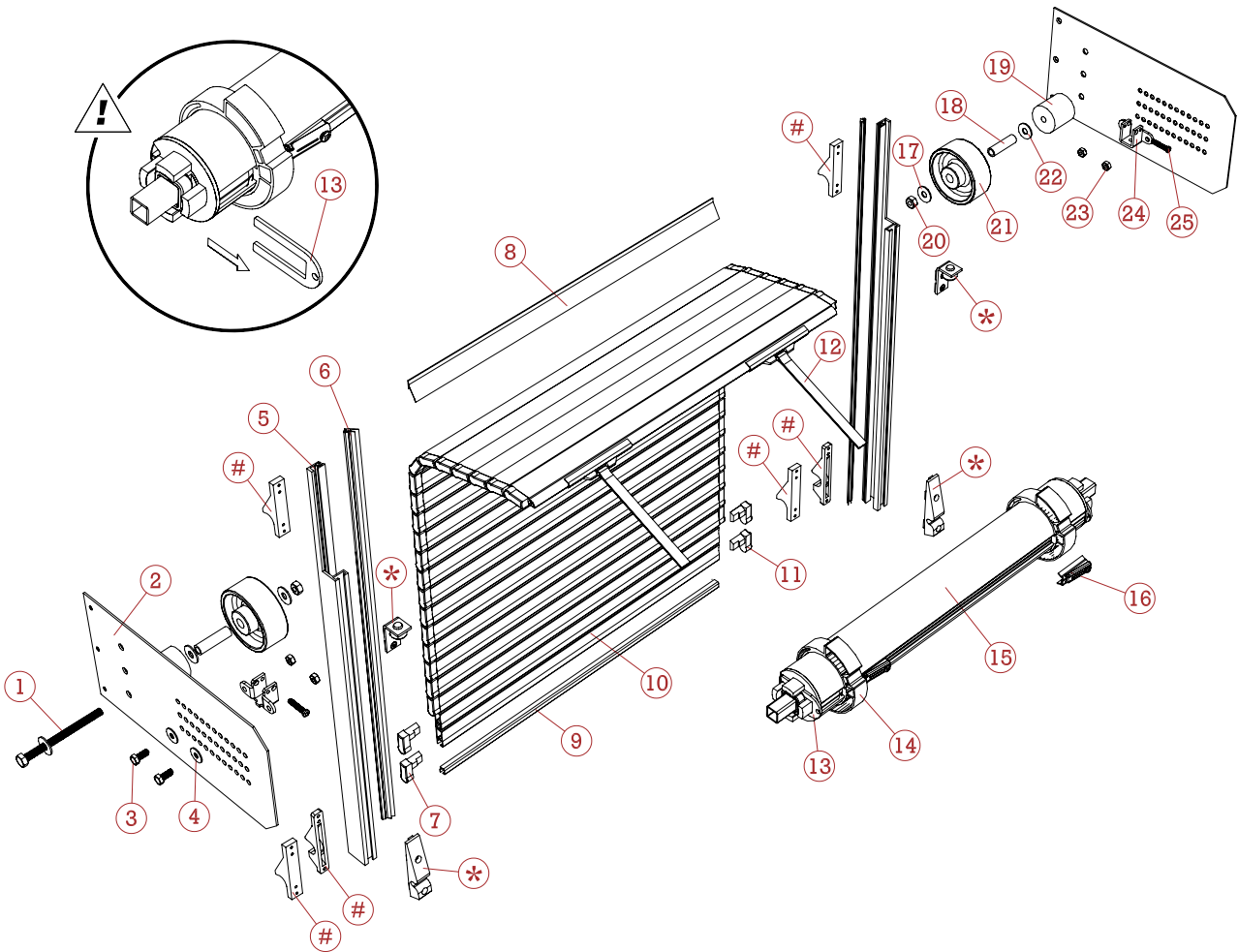
Waterproof by 4 seals



Number of turns	Opening OH	A	L mini B	C	P	E	F
2	700	80	110	140	240	160	20
3	1150	80	110	140	260	180	20
4	1700	100	120	140	290	200	30
5	2300	120	140	160	310	220	40

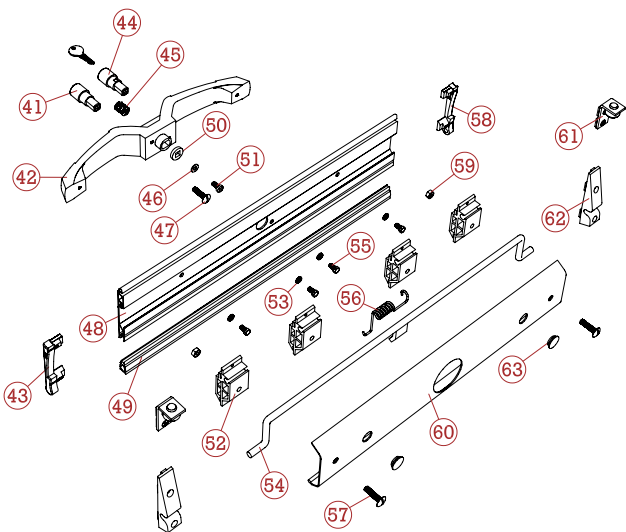
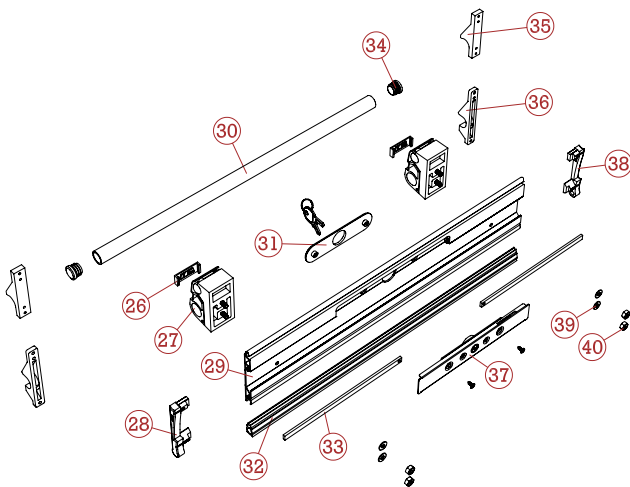


EXPLODED VIEW ALU 30 FRONT ROLL



Bar type closing

* Double handle closing



ELEMENT LIST ALU 30 FRONT ROLL

REP	CODE	Description
1	3300	STAINLESS SCREW TH 8 X 100
2	3115	SIDE PANEL FOR ALU 30
3	3303	STAINLESS SCREW TH 6 X 16
4	3304	STAINLESS L 6 RING
5	1300	STANDARD TRACK
6	2020	TRACK SEAL
7	4002	SLAT LEFT CAP
8	2030	TOP SEAL
9	2002	INNER SLAT SEAL (ML)
10	1001	ABE SLAT 30
11	4003	SLAT RIGHT CAP
12	8114	LOOPS GUIDE
13	3108	BLOCKING FORK
14	4108	PROGRESSIVE ROLLING RINGS (62)
15	8001	ROLLER (DIAM) 62
16	3106	FASTENING FOR TUBE (62)
17	3301	STAINLESS RING L 8
18	3109	STEEL SPACER FOR WHEEL 80
19	4107	PLASTIC SPACER FOR WHEEL OF 80
20	3302	LOCK NUT STAINLESS M 8
21	4110	WHEEL 80 DIA
22	3301	STAINLESS RING L 8
23	3305	LOCK NUT STAINLESS M 6
24	3105	ROLLER SUPPORT
25	3135	SCREW AC ZN TCZ 5 X 25
26	4224	BLACK NAMELESS CAP
	4225	MCD CAP
	4227	RED NAMELESS CAP
27	8104	NAMELESS HANDLE LEVER ASSEMBLY

REP	CODE	Description
28	4017	LEFT ROD END FOR TERMINAL PROFIL
29	1101	TERMINAL PROFIL AB
30	1400	ROUND ALUMINIUM TUBE (20 DIA)
31	3233	KEY LOCK HOLDER
32	2010	BOTTOM SEAL (ML)
33	8122	LOCKING ROD 8 X 3 LG 1000
34	4210	CAP (DIA 20)
35	4214	STRIKER
36	4223	BLOCKING STRIKER
37	3950	ROUND CYLINDER LOCK N° 061
	3951	ROUND CYLINDER LOCK N° 172
	3952	ROUND CYLINDER LOCK N° 283
	3953	ROUND CYLINDER LOCK N° 394
38	4018	RIGHT ROD END FOR LAST STRIP
39	3319	STAINLESS RING M 5
40	3320	LOCK NUT STAINLESS M 5
41	4202	PUSH BUTTON
42	4200	DOUBLE MCD HANDLE
43	4017	TERMINAL SLAT LEFT CAP
44	3901-3920	CYLINDER FOR LOCK N°1001 at N°1020
45	3226	COMPRESSION SPRING FOR SMALL ROD
46	3319	STAINLESS RING M 5
47	3345	SWING ARM SCREW 6 X 40
48	1101	TERMINAL SLAT AB
49	2010	BOTTOM SEAL (ML)
50	4201	SEAT FOR DOUBLE HANDLE
51	3324	METAL STAINLESS SCREWS TC 5 X 12 POZIDRIV

REP	CODE	Description
52	4251	FIXATION ROD BEARING
53	3307	STAINLESS RING A Z 5
54	3212	0 A 1 M ROD
	3213	1 A 1.5 M ROD
	3214	1.5 A 2 M ROD
	3215	2 A 250 M ROD
55	3306	STAINLESS SCREW TH 5 X 10
56	3207	TORSION SPRING fFOR ROD
57	3335	STAINLESS TRL SWING ARM SCREW
58	4018	TERMINAL SLAT RIGHT CAP
59	3305	LOCK NUT STAINLESS M 6
60	1200	COVER
61	8117	COMPLETE UPPER STOP
62	8115	LOCK ASSEMBLY
63	4208	CAP

ASSEMBLY INSTRUCTIONS

- 1- Check the positioning of the tracks (5) and the side panels (2) in the vehicle's compartment.
- 2- Fix the tracks (5) on the mountings of the opening.
- 3- Fix the side panels (2) on the same mountings. Make the possible gap between the flanges rigid.
- 4- Position the self-adhesive joint (8) behind the header and between the tracks, after having adjusted it. It must be positioned so as to be able to scrape the door on opening and closing.
- 5- From the inside of the compartment or the vehicle, place the roller (15) in the supports (24) fixed onto the side panels. Take care that the label is always on the right as seen from the interior and the fixation fastenings (16) towards the inside. Close the supports with the correct screws (25).
- 6- Set the door into the tracks sliding it in gently. Be careful not to damage it.
- 7- Set the wheels (21) on the side panel with the correct bolt (1), the correct spacers (18 and 19) and the correct (20) swivel. Check the alignment of the exterior of the wheel with the interior side of the track, so that the wheel does not catch the opening of the rail when manipulated.
- 8- Attach the door to the roller with the help of the straps (12) and the fastenings (16).
- 9- After this operation and only when it is finished, please pull out the forks (13) to the end of the roller in order to free the tension.
- 10- Put the closing system into place.
- 11- Powder a little silicone into the rails