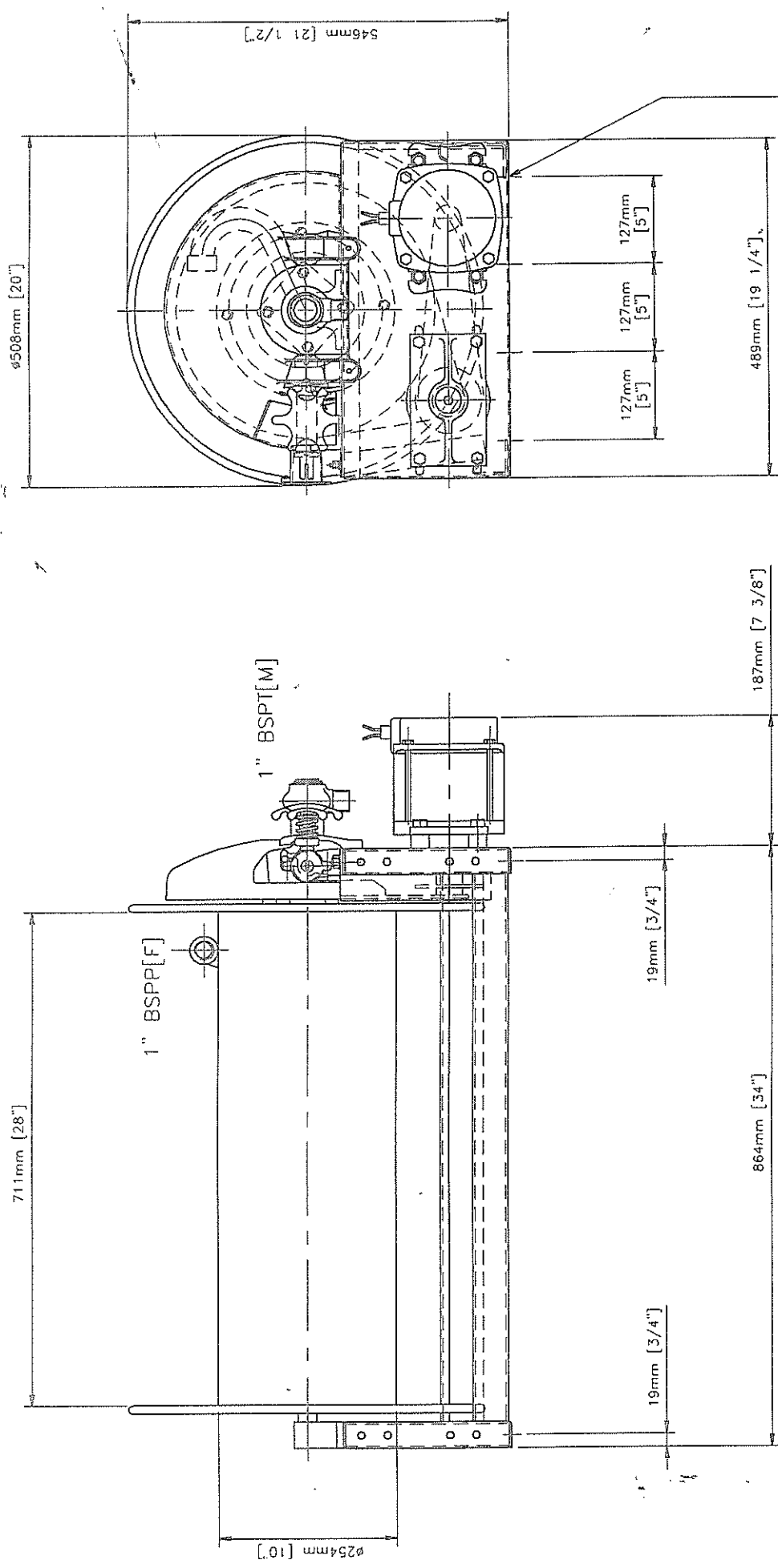


PART/DRG. No.
7846.RR.M.24.N



4-HOLES 10.3mm [15/32"] DIA.
IN EACH ENDPLATE.

MAX. WORKING PRESSURE 93 BAR

REDRAWN MODIFIED PICTORINALLY.
GUARD.
FIRST DRAWN.

CAD FILE: HR47V7846-28VRR024N TOLERANCES UNLESS SPECIFIED DECIMAL = +/- 0.005" FRACTIONAL = +/- 1/64" DECIMAL mm 0.0 = +/- 0.50 mm DECIMAL mm 0.00 = +/- 0.15mm ANGULAR +/- 1/2'		DATE 23/01/1996	TITLE:- HR47 1" ELECTRIC COMPACT HOSE REEL. 711mm [28"] DRUM, 24V dc MOTOR, RH INLET, RH REWIND, PAINTED PEUGEOT RED.	PART/DRG. No. 7846.RR.M.24.N
No. 1 CN No. 2 DATE 23/01/96	2 CN15 03/03/97	3 04/04/00	DRAWN BY WFR	WORKS O/NO QTY.
3rd ANGLE PROJECTION			CHECKD. BY JH	DUE
COLLINS YOULDON LTD. South Road, Templefields, Harlow, Essex, UK, CM20 2AX Tel +44 (0) 1279 431011 Fax +44 (0) 1279 433110				