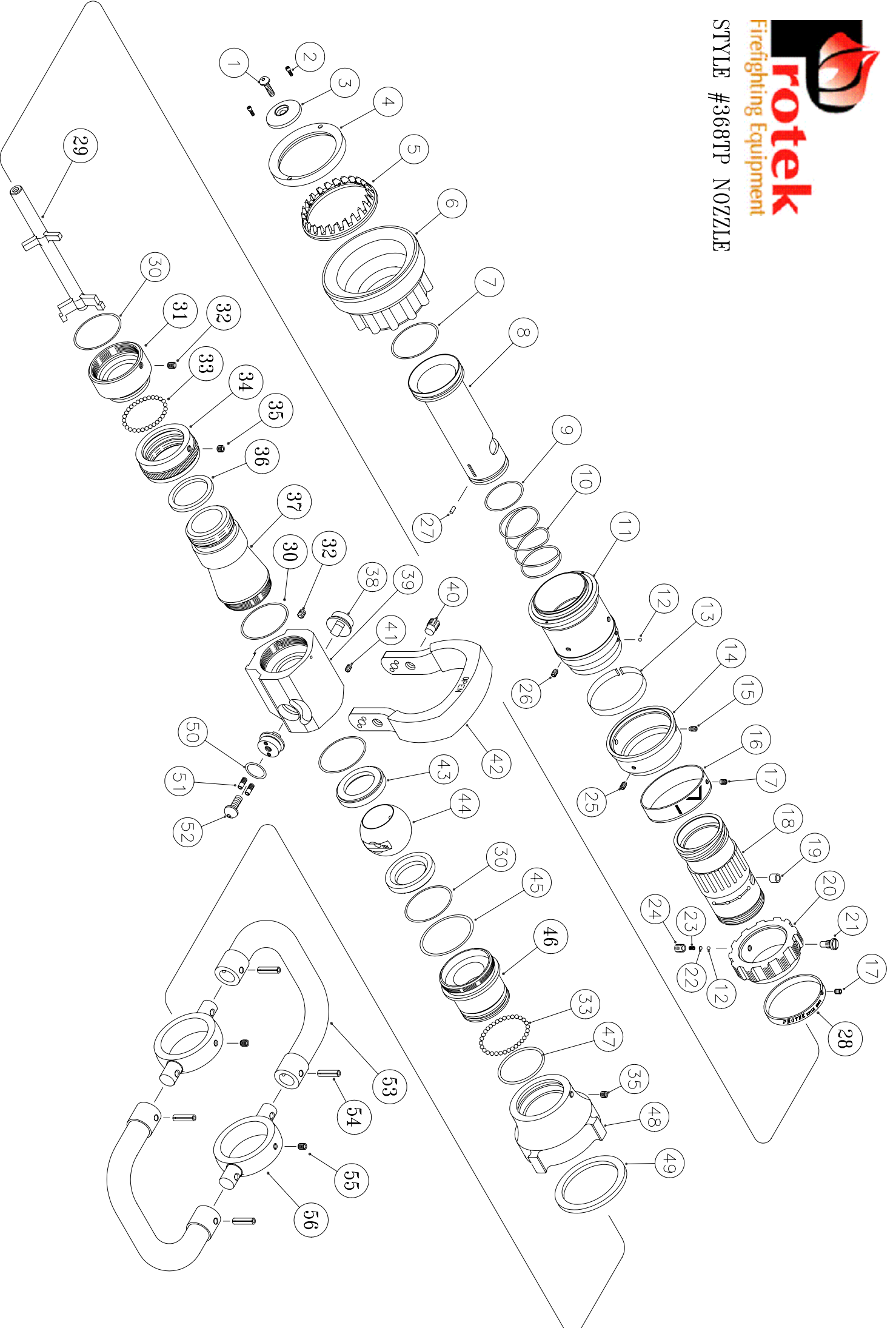




Firefighting Equipment

STYLE #368TP NOZZLE



SERVICE PART LIST FOR #368 TP NOZZLE

ITEM NO.	DESCRIPTION	PART NO.	QUANTITY
1	SCREW	S0012	1
2	SCREW	S0065	2
3	BAFFLE HEAD	A1010	1
4	RETAINING RING	A1020	1
5	SPINNING TEETH	D0011	1
6	BUMPER	D0040	1
7	O-RING	O0330	1
8	DISCHARGE TUBE	A1043	1
9	O-RING	O0205	1
10	SPRING	F0088	1
11	PATTERN SLEEVE	A1030	1
12	BALL BEARING	F0071	2
13	SPRING	F0022	1
14	RING	A1032	1
15	SCREW	S0130	2
16	INDICATING BAND	A1063	1
17	SCREW	S0016	2
18	NOZZLE BODY	A1052	1
19	ROLLER	F0750	1
20	CONTROL RING	A1060	1
21	SCREW	S0250	1
22	INSERT	F0217	2
23	SPRING	F0090	2
24	SCREW	S0220	2
25	SCREW	S0090	1
26	SCREW	S0064	3
27	PIN	F0290	1
28	INDICATING BAND	A1038	1
29	STEM	F0083	1
30	O-RING	O0230	4

31	RING	A1083	1
32	SCREW	S0114	2
33	BALL BEARING	F0076	66
34	ADAPTER	A1094	1
35	SCREW	S0112	2
36	GASKET	D0070	1
37	BODY	A1113	1
38	ACTUATOR	F0101	2
39	VALVE BODY	A1072	1
40	SCREW	S0201	2
41	SCREW	S0120	1
42	HANDLE	A1021	1
43	SEAT	F0310	2
44	BALL	F0111	1
45	O-RING	O0340	1
46	ADAPTER	A1081	1
47	O-RING	O0326	1
48	SWIVEL	A1094	1
49	GASKET	D0071	1
50	O-RING	O0090	2
51	SSREW	S0131	4
52	SCREW	S0031	2
53	HANDLE ASSEMBLY	A1111	2
54	ROLL PIN	F0150	4
55	SET SCREW	S0116	2
56	HANDLE RING	A1112	2